

KITCHEN COMPACT

2009
PRODUCT BROCHURE



NATIONWIDE
MANUFACTURER
FOR OVER
50 YEARS.
OAK AND MAPLE
CABINETS



www.GreenCabinetSource.org

MAPLE



Lynwood



**Kitchen Kompact is
located in Jeffersonville,
Indiana, across the Ohio
River from Louisville,
Kentucky.**

Lynwood, with *maple raised panel* doors and plywood drawers, is our premiere line of cabinetry. High-grade maple and classic styling make Lynwood the right selection when you demand the best! Door pulls not included.



Mellowood



MAPLE



Mellowood offers simple elegance with a **maple flat panel** door profile. Its smooth clean look is the perfect choice for contemporary or colorful decorating styles. Plywood drawers standard. Golf clubs not included.



OAK

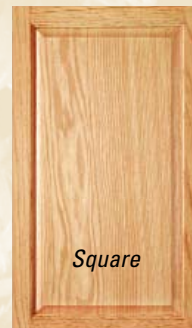
Richwood Lite



Richwood Lite features ***oak raised panel*** cabinetry with plywood drawers. Bring a designer look to your home for a fraction of the cost of custom-built cabinets. Through creative use of cabinets and accessories, you can have the kitchen you've always imagined.



*Cathedral**



Square

**Tall cabinets (T) not available in Cathedral.*

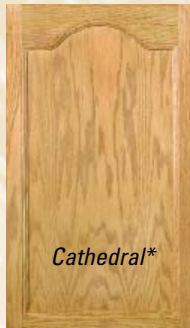
Chadwood

OAK



With ***oak flat panel*** doors and plywood drawers, Chadwood is our most economical and best selling line. Now with 36" high walls and a 42" high angle wall (as shown), Chadwood can be designed and accessorized to fit any need, taste or budget.

Kitchen Kompact
is a family-owned
company that has
been in business for
over 50 years.



*Cathedral**

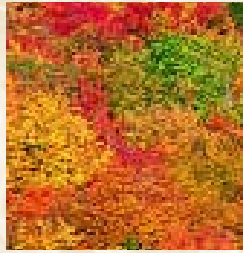


Square

**Tall cabinets (T) not available in Cathedral.*



The Enduring Beauty of Wood



There's solid wood durability built into every KK cabinet. From the oak or maple on the doors to the solid pine corner blocks on the base cabinets, each cabinet is built to last.

Note these quality features:

- All frames are built of solid 3/4" oak or maple. Each rail is kiln-dried, joined by mortise and tenon, and then glued for added strength.
- Solid wood corner blocks are glued and power nailed.
- Solid wood toe kicks, 3/4" thick.
- Solid wood hanging strips on wall and base cabinets, located at the top and bottom.
- End panels are wood veneered, 1/2" thick engineered wood core plywood.

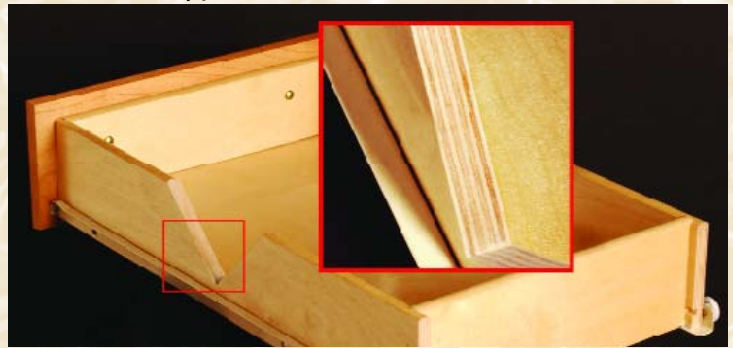
All cabinets get stained and sealed and are protected with a durable topcoat. The result is a surface that is virtually "family-proof," resisting many household chemicals, water, alcoholic beverages, mild acids and even nail polish.

And there's more, all KK cabinets feature plywood drawers as a standard. A front-to-back epoxy-coated drawer system is securely attached to a solid wood strip in the back of the cabinet for stability, and years of smooth operation. We also offer handicapped accessible designs.

The result is more than just a kitchen you can cook in. It's a kitchen you can live in at a price you can live with.

Kitchen Kompact, Inc. reserves the right to change design, specifications or materials without being obliged to incorporate such changes in products of prior manufacture. The artwork and specifications contained herein are the property of Kitchen Kompact, Inc., and may not be copied or reproduced without the written consent of the company.

All KK cabinets feature plywood drawers.



Custom Touches

These accessories, available for KK cabinets, give any kitchen a custom look. Ask your dealer for details.

Middletons stem glass holder



Middletons crown molding



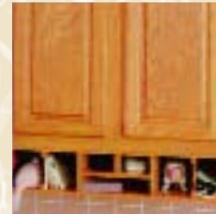
Middletons lattice wine rack



Pantry roll-out trays



Middletons desk organizer



Lazy Susan



Appliance garage



Middletons wood hood



Base roll-out trays



Rev-A-Shelf sink front tray



Rev-A-Shelf pull-out filler



Rev-A-Shelf half moon shelf



Rev-A-Shelf double bin basket



Microwave cabinet



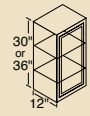
Middletons Oak/Maple toe kick



www.rev-a-shelf.com
1-800-626-1126

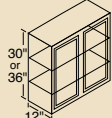
www.middletonsmouldings.com
1-517-278-6610

WALL Cabinets



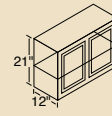
36" High

12WT* 27WT
15WT* 30WT
18WT* 33WT
21WT* 36WT
24WT*



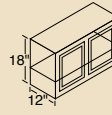
30" High

9W* 27W
12W* 30W
15W* 33W
18W* 36W
21W* 42W
24W* 48W



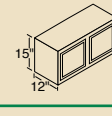
21" High

24R* 36R
30R 42R



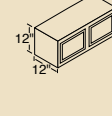
18" High

24Y* 36Y
30Y 42Y



15" High

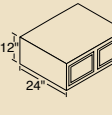
30X 36X
33X 39X



12" High

12X12* 27X12
15X12* 30X12
18X12* 33X12
21X12* 36X12
24X12*

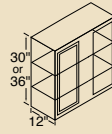
STACKERS



12" High

18S* 30S
24S*
*to be stacked on
BRB/Oven*

WALL CORNER Cabinets



36" High

24WCT* 36WCT*



30" High

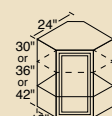
24WC* 42WC
36WC* 48WC
39WC
all can be pulled 4-1/2"



12" High

24X12C* 36X12C*

ANGLE WALL Cabinets



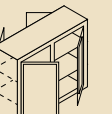
42" High

24AXT



36" High

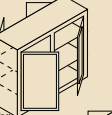
24AT



30" High

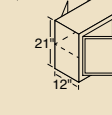
24A

PENINSULA WALL Cabinets



30" High

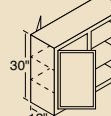
18W-P* 36W-P
30W-P



21" High

36R-P 42R-P

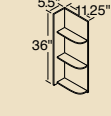
PENINSULA WALL CORNER Cabinet



30" High

24WC-P

WALL WHATNOT Cabinet

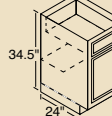


36" High

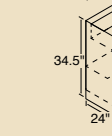
WWN

*trim to desired
height and width*

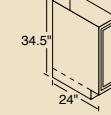
BASE Cabinets



12B* 30B
15B* 36B
18B* 42B
21B* 48B
24B*

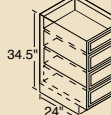


TRAY Cabinet



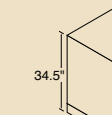
9T

DRAWER Cabinets



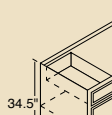
15D 24D
18D

RANGE & SINK BASE Cabinets



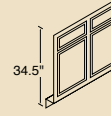
30RBS 42RBS
36RBS

SINK BASE Cabinets



60SB 72SB
*no shelf under sink –
no back
not available in
Richwood Lite or
Lynwood*

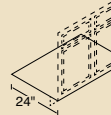
SINK FRONTS



18SF* 42SF†
30SF*† 48SF†
36SF†

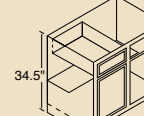
*† may be cut down 3" on
each side; not available
in maple*

SINK FRONT BOTTOMS

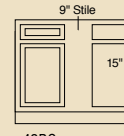
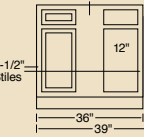


36SFB 48SFB

BASE CORNER Cabinets

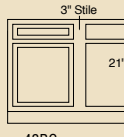


39BC 48BC
42BC



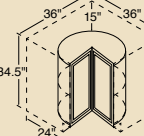
42BC
can be pulled to 49"

39BC
*must be pulled 3"
can be pulled to 46"*



48BC
can be pulled to 49"

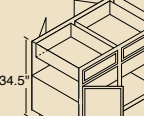
LAZY SUSAN CORNER Cabinet



36LS

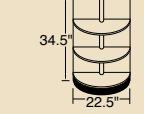
*shipped without
finished ends*

PENINSULA BASE Cabinets



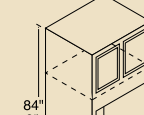
18B-P* 48B-P
36B-P 42BC-P
42B-P 48BC-P

BASE WHATNOT Cabinet



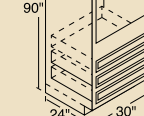
BWN

OVEN Cabinets



90" High

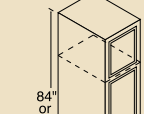
30OUT



84" High

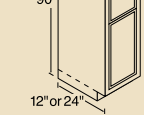
30OU

BROOM Cabinets



90" High

18BRWT 24BRBT
18BRBT

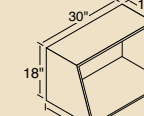


84" High

18BRW 24BRB
18BRB

*lower doors open as
one; adjustable shelf kit
available for all sizes*

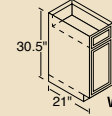
MICROWAVE Cabinet



30MW

*for proper height, install
under a 30X cabinet*

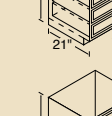
VANITY Cabinets



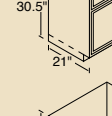
V12B

V12B V36SD
V15D V42S†
V24S V48S†
V30S V30KH††

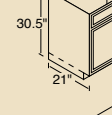
*† two outside working
drawers
†† may be cut up to 3"
on each side*



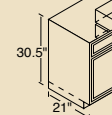
V15D



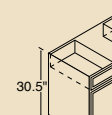
V24S



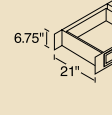
V30S



V36SD

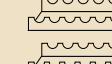


V42S
V48S



V30KH

ACCESSORIES



Wine Rack (kit)



Appliance Garage
to fit beneath 24A



Pantry/Base
Roll-Out Tray
15BT 24BT
18BT

www.kitchencompact.com

Cabinet Code Descriptions

For ease of ordering, the numerical designation indicates the cabinet width, the letter identifies the height.

*single door

*Tall cabinets (T)
available in square
door styles only.*

KITCHEN KOMPACT



Kitchen Kompact Corporate Offices and Manufacturing Facilities are located in Jeffersonville, IN, across the Ohio River from Louisville, KY.



Kitchen Kompact is certified under the Kitchen Cabinet Manufacturers Association's Environmental Stewardship Program*.

* This certification has been recognized by the National Association of Home Builders' (NAHB) with the Green Building Award for Advocate of the Year for its environmental and sustainability achievements.



Kitchen Kompact, Inc.
911 East 11th St. (47130)
P.O. Box 868
Jeffersonville, IN 47131-0868
Tel: 812/282-6681
Fax: 812/282-7880
Website: www.kitchenkompact.com