

KK Door Styles

Kitchen Kompact, Inc.
911 E. 11th St. (47130)
P.O. Box 868
Jeffersonville, IN 47131-0868
TEL: 812/282-6681
FAX: 812/282-7880
www.kitchenkompact.com

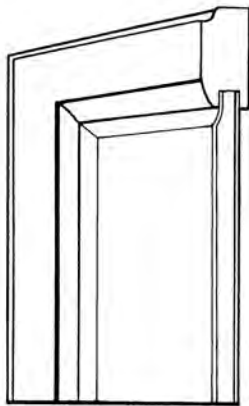


Lynwood Maple: Door frames are made of solid hard maple, mortised and tenoned. The raised panel insert is made of warp-resistant engineered wood for greater stability, with a sliced hard maple veneer face and back.

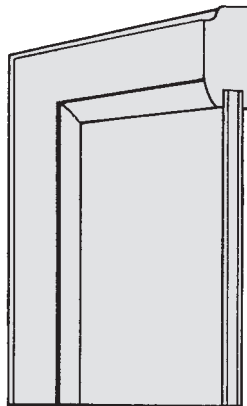
Bretwood and Mellowood Maple: Door frames are mortised and tenoned construction of solid maple. The flat plywood insert is a three-ply panel with a rotary cut hard maple veneer face.

Richwood Lite: Door frames are made of solid oak, mortised and tenoned, mounted flush to the face frame. The raised panel insert is made of warp-resistant engineered wood for greater stability, with a rotary cut red oak veneer face and back, and secured to the frame. Drawer heads have routed finger pulls.

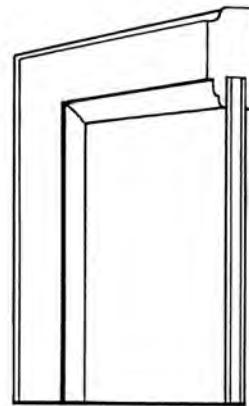
Chadwood: Solid Appalachian oak frames are joined by mortise and tenon. The flat plywood insert is a three-ply panel with a rotary cut red oak veneer face. Drawer heads have routed finger pulls.



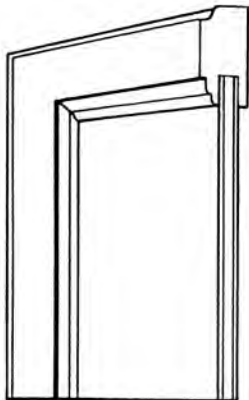
Lynwood Maple



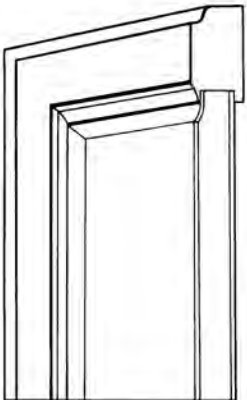
Bretwood Maple



Mellowood Maple



Chadwood



Richwood Lite

KK Wall Cabinets

Kitchen Kompact, Inc.
911 E. 11th St. (47130)
P.O. Box 868
Jeffersonville, IN 47131-0868
TEL: 812/282-6681
FAX: 812/282-7880
www.kitchenkompact.com



Frames: All frames are built of solid $\frac{3}{4}$ " oak or maple, kiln-dried rails, joined by mortise and tenon with glue.

End Panels: End panels are full $\frac{1}{2}$ " wood veneered plywood construction fastened to front frame with full $\frac{1}{2}$ " tongue-in-groove to eliminate face nailing.

Backs: $\frac{1}{8}$ " hardboard recessed in sides.

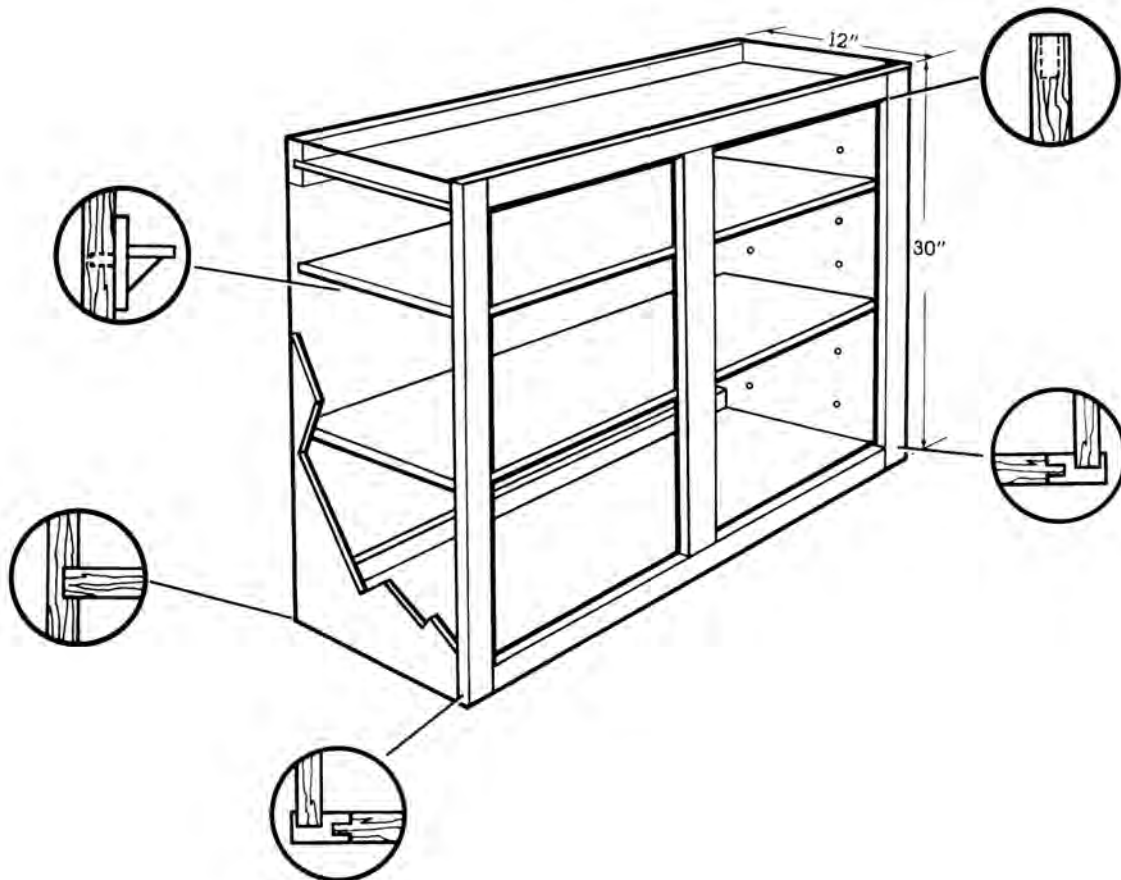
Tops & Bottoms: $\frac{3}{16}$ " hardboard, dadoed into sides and interlocked into hanging rails and secured with adhesive for added strength.

Hanging Rails: Solid wood, $\frac{3}{4}$ " x $2\frac{5}{8}$ ", located at top and bottom.

Shelves: All wall cabinets feature adjustable shelves. A selection of six different heights is built into each 30" high unit. On 2-door wall units, the center 3" stile is used for center support of adjustable shelves. It is recommended that a $\frac{1}{4}$ " hole be drilled in the back for additional center support. The extra shelf clip is provided. Shelves are $\frac{1}{2}$ " engineered wood, with rounded front edge and printed wood grain.

Hardware: Chadwood, Richwood Lite, Bretwood Maple, Mellowood Maple and Lynwood Maple feature concealed self-closing hinges — no door pulls included.

Finish: A 4-step process is applied to the exterior finish of all Kitchen Kompact Cabinets: Stain, Sealer, Sanding, and Catalyzed top coat. This finish is resistant to household chemicals such as water, beverages, mild acids — even nail polish. Richwood Lite and Chadwood both feature a special hand-wiped stain.



KK Base Cabinets

Kitchen Kompact, Inc.
911 E. 11th St. (47130)
P.O. Box 868
Jeffersonville, IN 47131-0868
TEL: 812/282-6681
FAX: 812/282-7880
www.kitchenkompact.com



Frames: All frames are built of solid $\frac{3}{4}$ " oak or maple, kiln-dried rails, joined by mortise and tenon with glue.

End Panels: End panels are full $\frac{1}{2}$ " wood veneered plywood construction fastened to front frame with full $\frac{1}{2}$ " tongue-in-groove to eliminate face nailing.

Backs: $\frac{1}{8}$ " hardboard, recessed in sides.

Bottoms: $\frac{3}{16}$ " hardboard, dadoed into sides and power nailed into supporting strips.

Hanging Rails: Solid wood, $\frac{3}{4}$ " x $1\frac{1}{2}$ ", located at top.

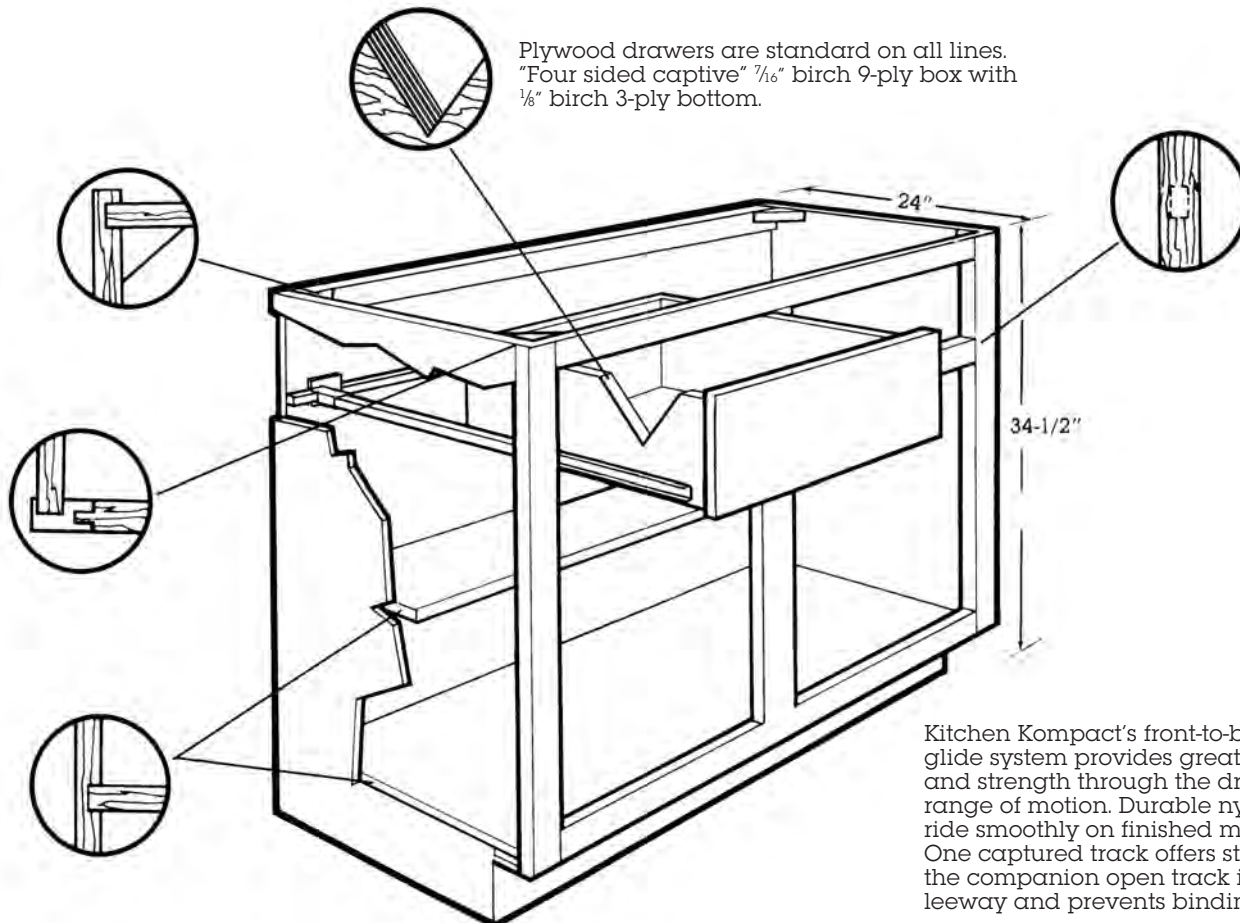
Corners: Wood blocks glued and power nailed.

Toe Kick: $\frac{3}{4}$ " pine.

Shelf: $\frac{1}{2}$ " engineered wood 11" deep dadoed into sides, with rounded front edge and printed wood grain.

Hardware: Chadwood, Richwood Lite, Bretwood Maple, Mellowood Maple and Lynwood Maple feature concealed self-closing hinges — no door pulls included.

Finish: A 4-step process is applied to the exterior finish of all Kitchen Kompact Cabinets: Stain, Sealer, Sanding, and Catalyzed top coat. This finish is resistant to household chemicals such as water, beverages, mild acids — even nail polish. Richwood Lite and Chadwood both feature a special hand-wiped stain.



KK Lazy Susan

Kitchen Kompact, Inc.
911 E. 11th St. (47130)
P.O. Box 868
Jeffersonville, IN 47131-0868
TEL: 812/282-6681
FAX: 812/282-7880
www.kitchenkompact.com



Frames: Solid $\frac{3}{4}$ " oak or maple, kiln-dried rails, joined by mortise and tenon with glue.

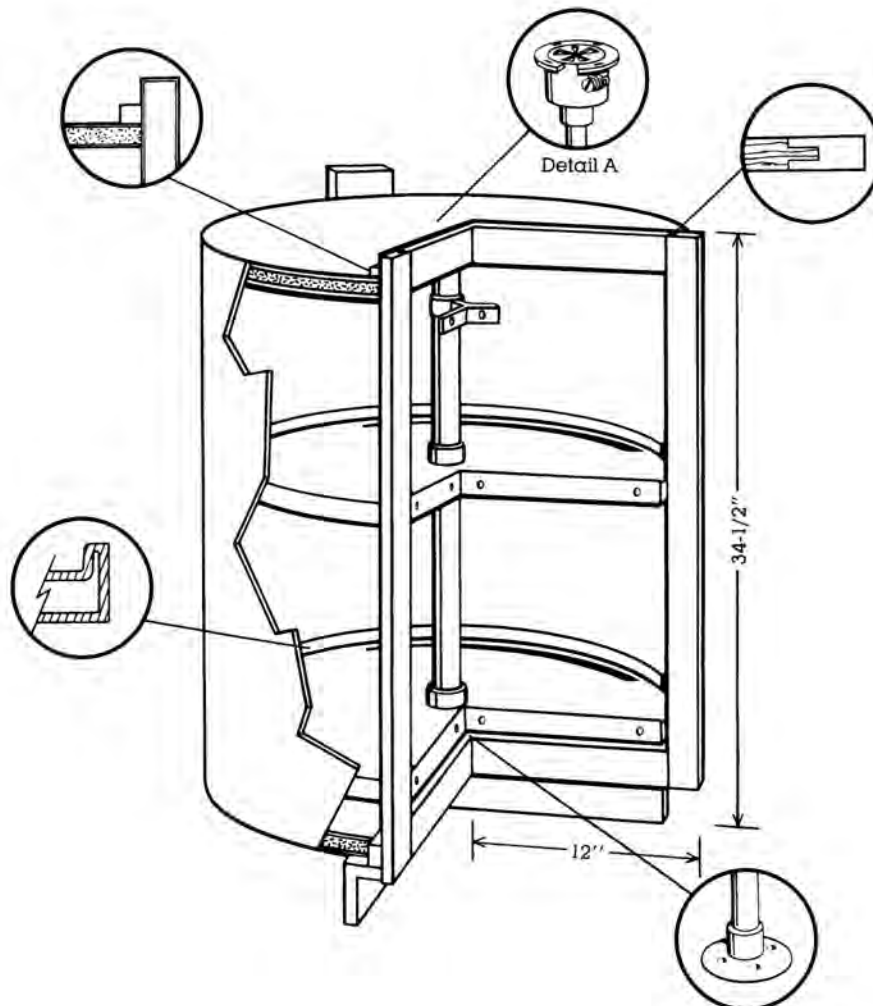
End Panels: Not required unless cabinet is used at the end of a run.

Toe Kick: $\frac{3}{4}$ " pine.

Shelf: Double-walled high impact polystyrene shelves have internal struts for maximum strength.

Hardware: Engineered with an adjustable mechanism (detail A) for aligning the vertical and rotational position of cabinet doors within the cabinet frame. The nylon gear and cam mechanism requires no lubrication.

Finish: A 4-step process is applied to the exterior finish of all Kitchen Kompact Cabinets: Stain, Sealer, Sanding, and Catalyzed top coat. This finish is resistant to household chemicals such as water, beverages, mild acids — even nail polish. Richwood Lite and Chadwood both feature a special hand-wiped stain.



HANDICAPPED CABINET SPECIFICATIONS

Handicapped Cabinets

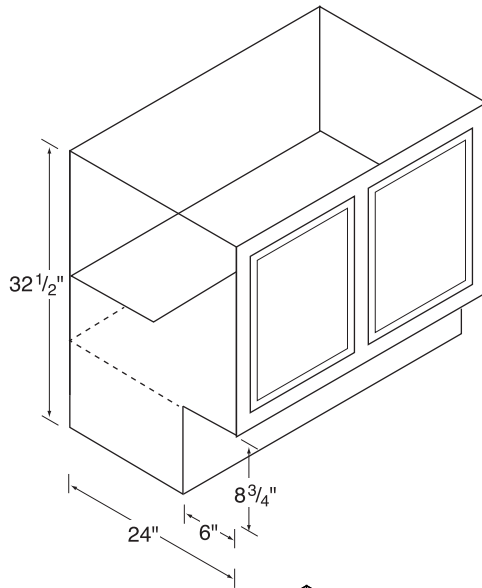
All Kitchen Kompact cabinet lines are available in easy-access design for the handicapped.

Wall Cabinets

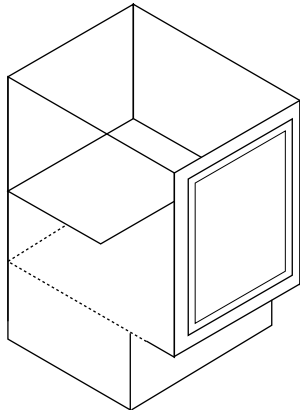
Kitchen Kompact standard wall cabinets conform to HUD/FHA requirements for housing for the handicapped.

Base Cabinets

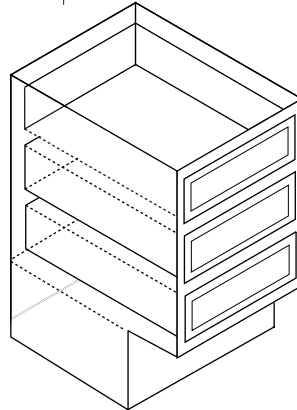
Base cabinets do not incorporate drawers. Use optional roll out trays, if needed, or include additional drawer cabinets.



H30B
H36B
H42B
H48B



H12B
H15B
H18B
H21B
H24B



H15D
H18D
H24D

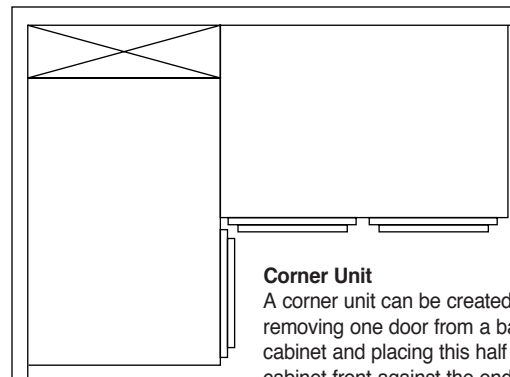
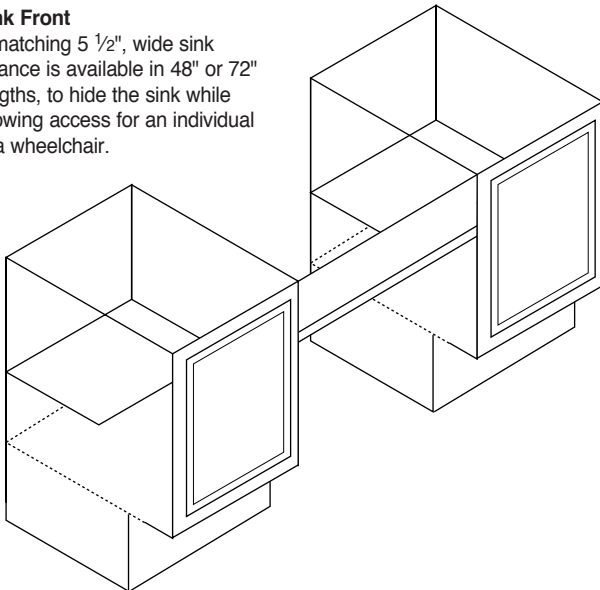
Kitchen Kompact's special easy access cabinets are designed with a lower overall height, and with extra toe space to accommodate the footrest of a wheelchair. Such cabinets are especially important for project work subject to HUD or FHA funding. Although there are currently no uniform standards for kitchens equipped for the handicapped, some HUD sponsored projects require that 10% of the units have bathroom facilities for the handicapped, and that half of these must also be equipped with kitchens designed for the handicapped.

For complete specifications, please refer to the appropriate spec. sheet for each cabinet line.

- Please allow a minimum of two weeks for delivery of cabinets designed for the handicapped.
- Please note – Handicapped cabinets not available in 9T, 36LS, Brooms (BRW - BRB), and 30OU.
- Price is net plus 10%

Sink Front

A matching 5 1/2" wide sink valance is available in 48" or 72" lengths, to hide the sink while allowing access for an individual in a wheelchair.



H39BC
H42BC
H48BC

Corner Unit

A corner unit can be created by removing one door from a base cabinet and placing this half of the cabinet front against the end of the first cabinet on the adjacent wall. (A cabinet smaller than 48" will leave some "dead" space in the corner).



Handicapped Vanities also available (28 1/2" H)

Kitchen Kompact, Inc. • P.O. Box 868 • Jeffersonville, IN 47131 • TEL: 812-282-6681 • FAX: 812-282-7880

www.kitchenkompact.com

Printed in USA HS 1008

